



Matrigold

Gold-in-Glass Jewellery

24 Carats



Matrigold Showroom & Art Studio
 Sanjana Community, Auroville - 605 101, India
 +91 413 2622 458 matrigold@auroville.org.in
www.matrigold.in Mon to Sat 9 am – 5 pm

MatriGold Gold-in-Glass Jewellery

Gold has been used since the beginning of time as an aid to spiritual growth and for beautification.

Matrigold offers a Divine selection of handmade jewellery items made with the same methods that the gold outer skin of the Matrimandir has been prepared - 24 carat gold fused into glass.

Every single piece of jewellery is made by hand, giving it its unique charm.

The international artist Birgitta Volz (www.birgittavolz.de) designs all our models.



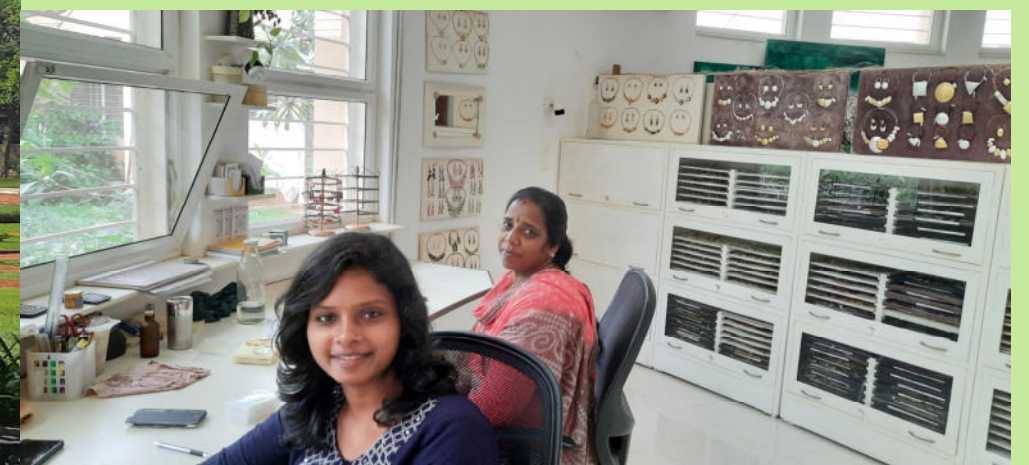
The Matrimandir, located in the international community of Auroville (www.auroville.org.in) in the south of India, is the largest golden building in the world. It is entirely covered with 24 carat gold in glass.

An international team of experts developed this gold-in-glass technique for its architecture and Birgitta Volz started to create the jewellery in 2003.

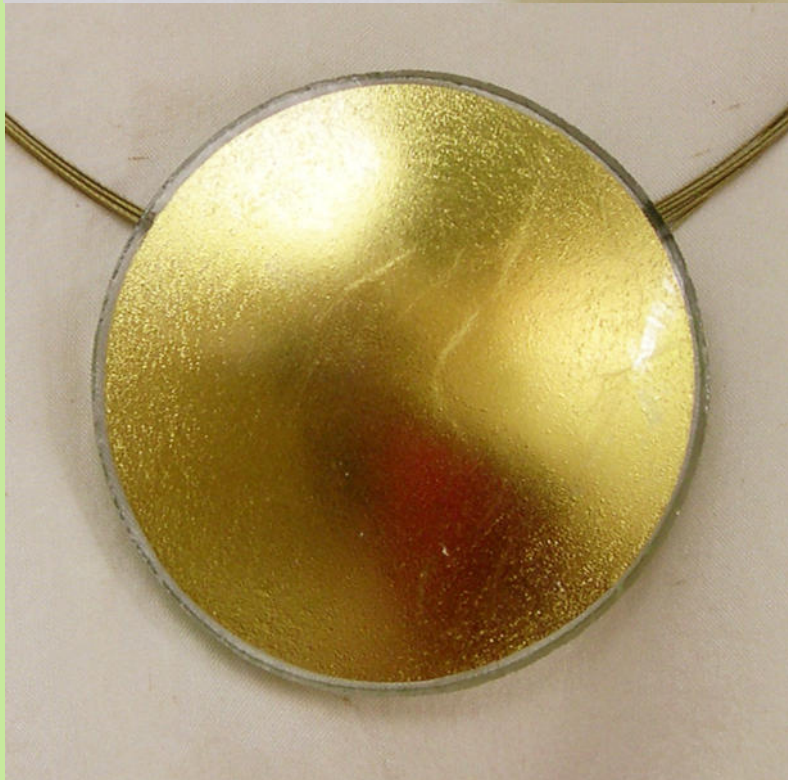
Pure gold leaf (24 karat) is fused between 2 layers of glass in a vacuum process. After the fusing, the pieces are ground individually and reheated on a mould for the final shaping.

We produce pendants in many sizes, earrings, necklaces, finger rings, bracelets and hairclips; cuff links and tie holders for men.

Our workshop is located in the residential area of Auroville. You can visit us in a private vehicle on appointment, which might get verified by the gate watchmen.



Sun Collection



We have a nice selection of elegant and casual necklace creations.

Single pendants are available in 2, 3, 4, 5.5, 7 and 8 cm.

Earrings (hanging or studs) in 2 and 3 cm, finger rings in 2 and 3 cm on adjustable ring fittings. We can make cuff or upper arm bracelets on order.



Our other fittings are made from hypoallergenic (nickel-free) alloys and are suitable for people with a sensitivity to nickel.





Some classic
jewels from the
Moon and single
piece creations
from **Moon-Sun**
collections.

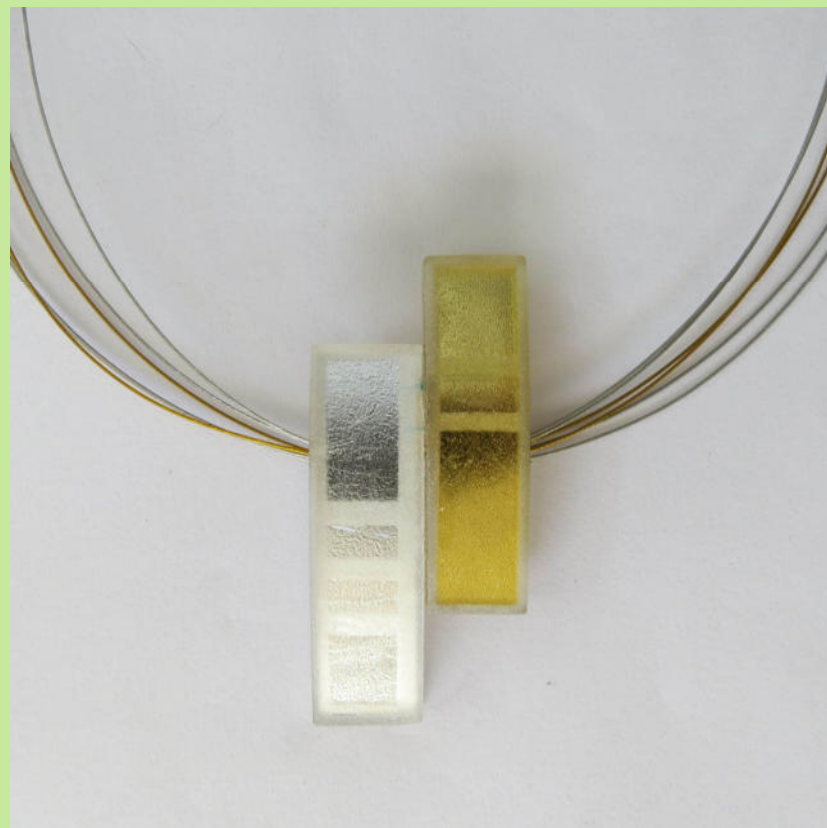


Oval
Collection

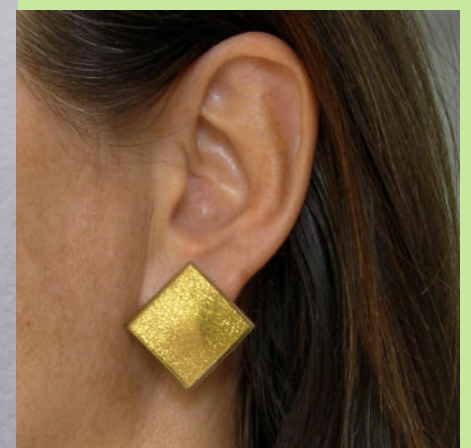
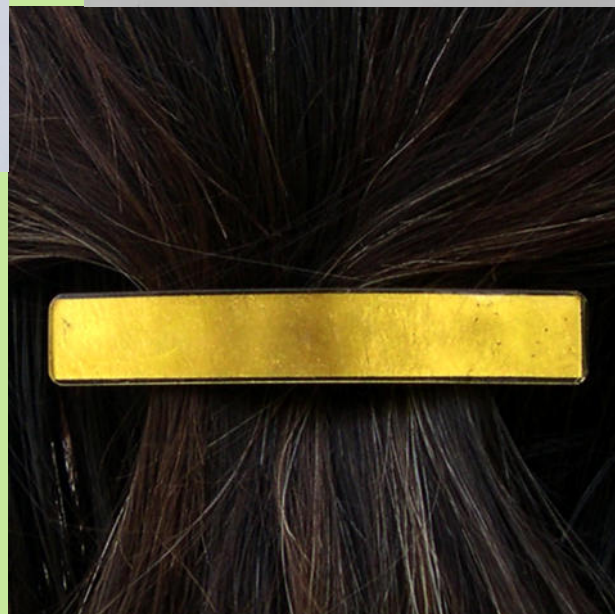


Moon and
Oval
Combinations



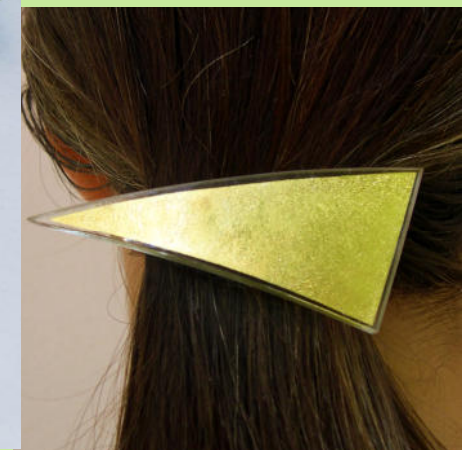
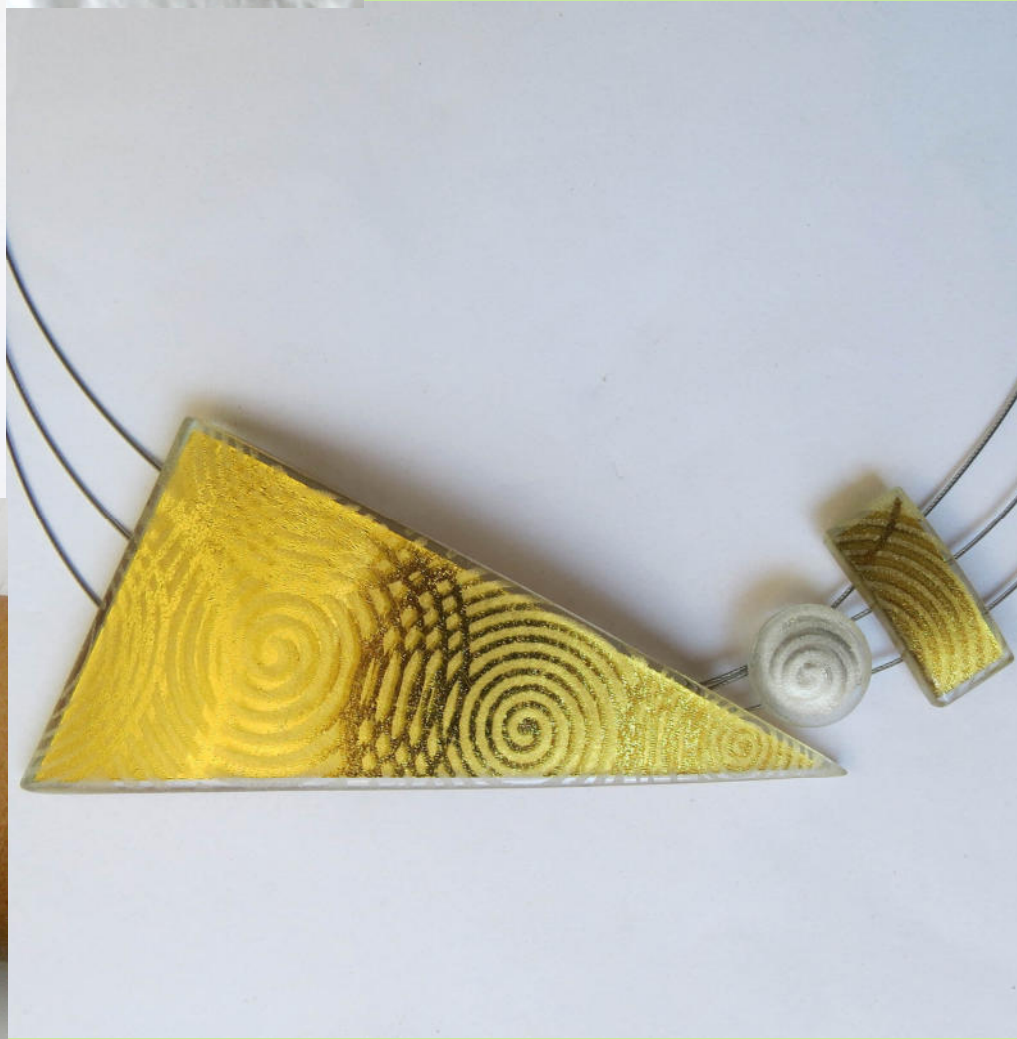
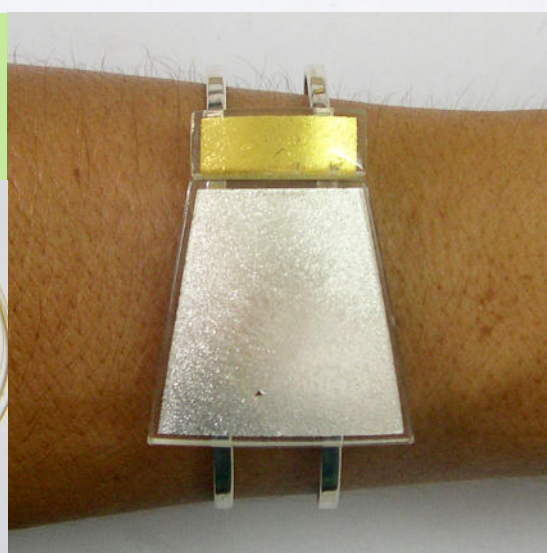


Some classic jewels and
single piece creations from
Rectangle and **Square**
Collections.





Some single piece jewels and some classics from the **Trapezoid** and **Triangle** Collections.

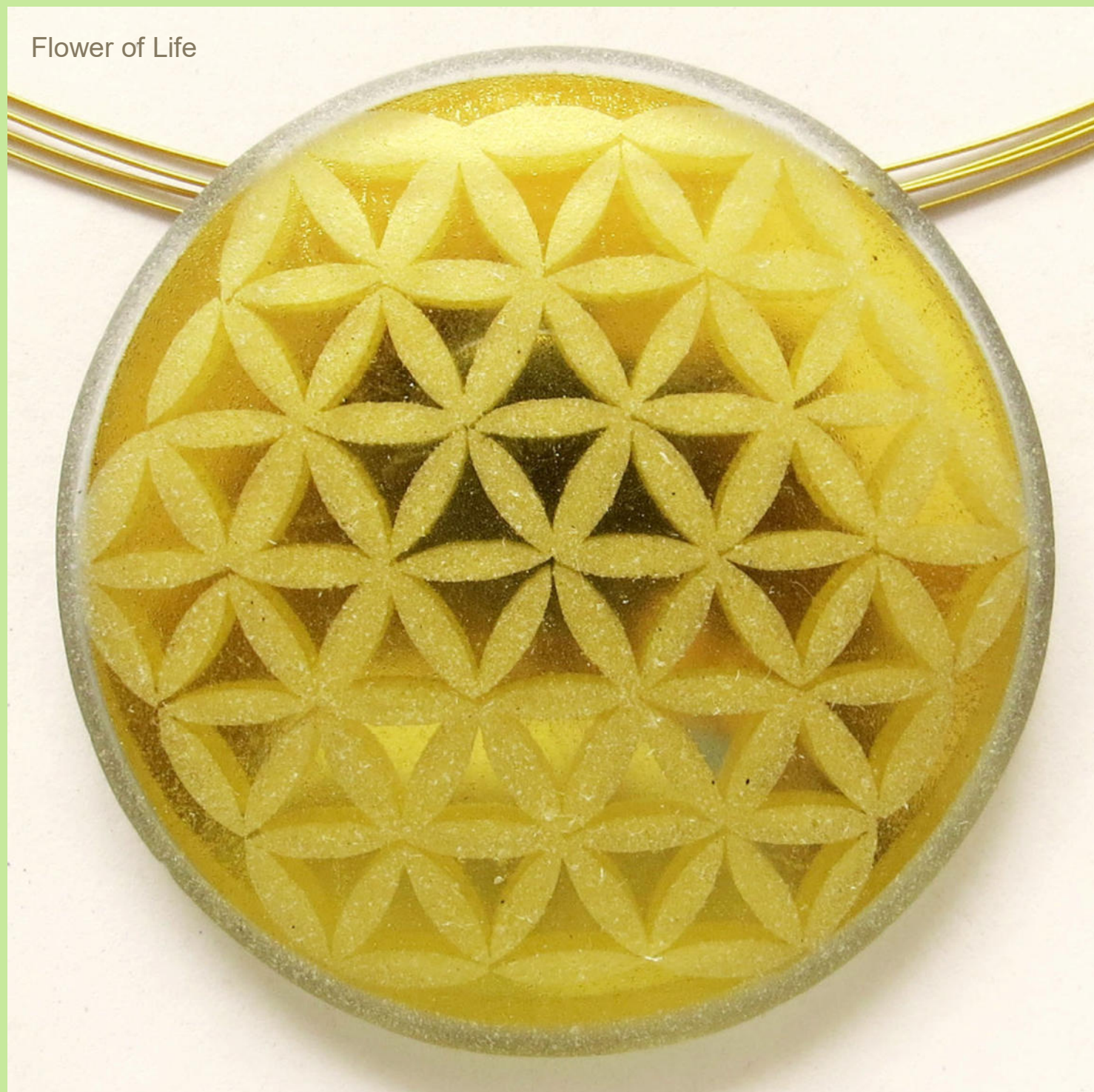




Some single piece jewels and some classics from the **Quarter Circle** and **Diamond** Collections.



Flower of Life



We also produce jewels with symbols, sandblasted on the surface of our gold-in-glass pieces. We have most motifs on stock in 2, 3 and 4 cm and some single pieces in 5,5, 7 or 8 cm. We also have a few single pieces on silver-in-glass or white gold-in-glass.

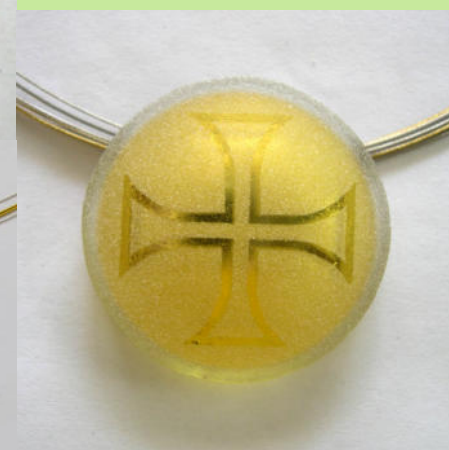


Ganesha
Bahai Star silver

Flower of Life
white gold



Spiral



Greek Cross



Islamic symbol



Unity symbol



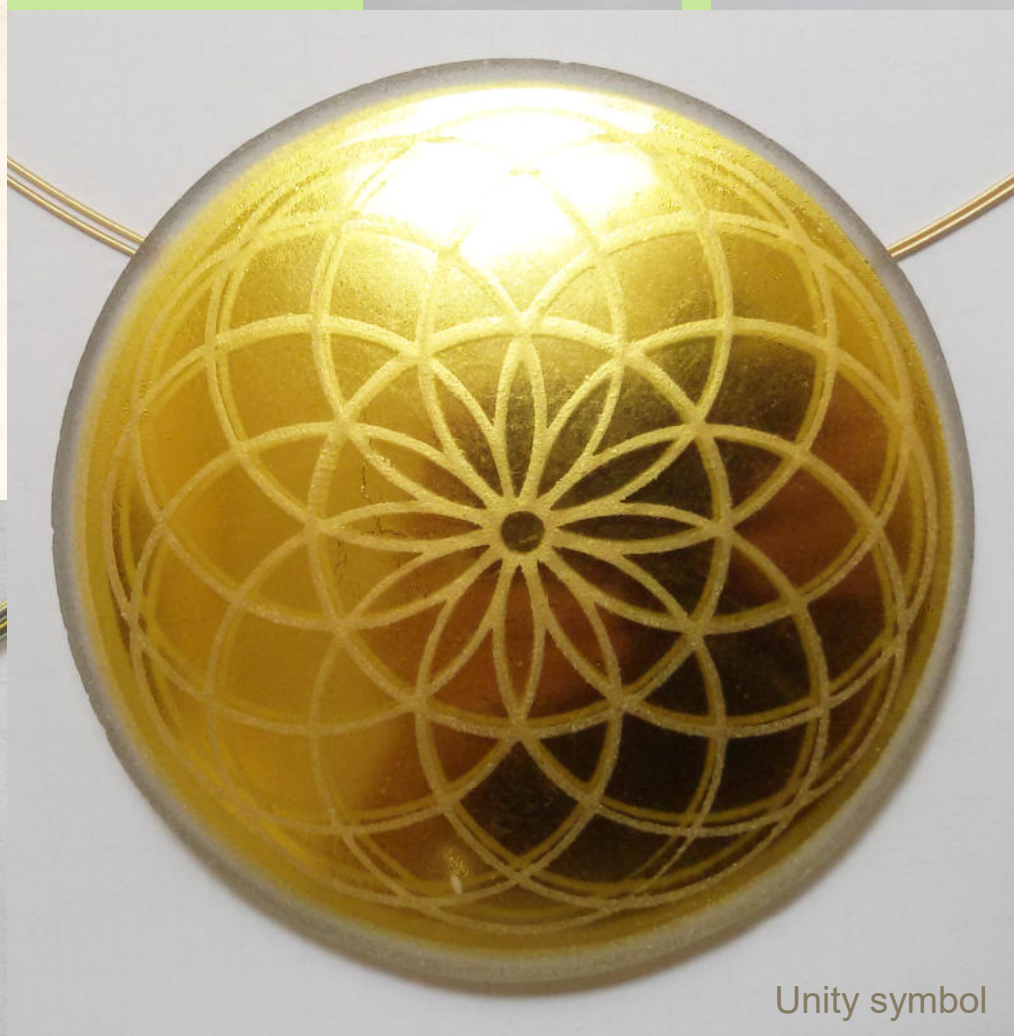
Mother Symbol



Om Auroville



Sri Aurobindo



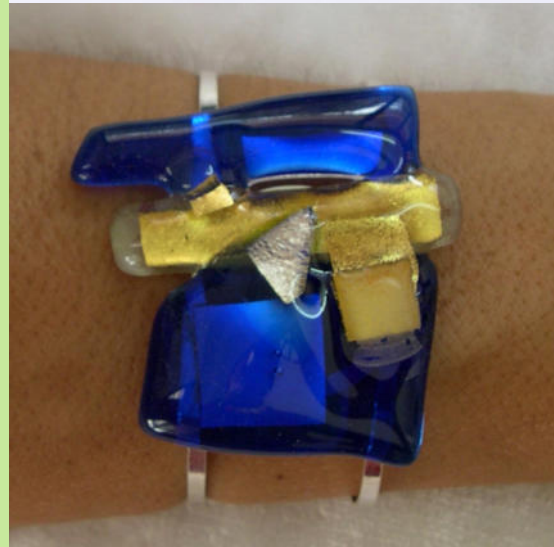


We have a wide range of sets (necklace & earrings), bracelets, rings and separate earrings in asymmetric designs in all colours and styles.



Colour Creations:

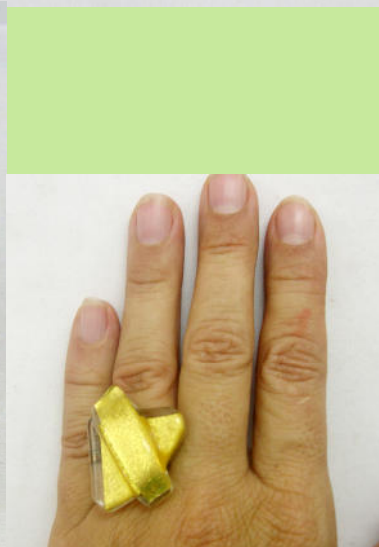
Those single piece creations obtain their incredible shine, because the coloured glass is underlain by gold, white gold or silver.





Gold Creations:

These exquisite jewels are all single piece creations. We have a wide range of hand cut asymmetric styles and shapes.



Our Jewellery Wire Chains

are made of 4 high quality stainless steel wires with skin-friendly nylon coating. We produce them in bright gold, matte gold or bright silver. Our chains are usually on stock in 38, 40, 42, 45, 48 or 50 cm. We also can make larger sizes on order in 60, 70 or 75 cm (6 wires).



How to care for your Matrigold wire chain:

Roll them gently in a circular fashion two times around your fingers. Then slip them inside two times and lock it. This will ensure that they keep a nice circular shape. Never fold the wire chains!



Our packing: Padded jewellery pouch to keep big pendants and bracelets safe, small bags for smaller sized jewels and the Matrigold box for larger necklaces.

